

Il Barbiere di Siviglia

G. Rossini
arr. Marco Mazzini

Allegro Vivace

p *p*

5

9 *p*

13 *p* *p* **A**

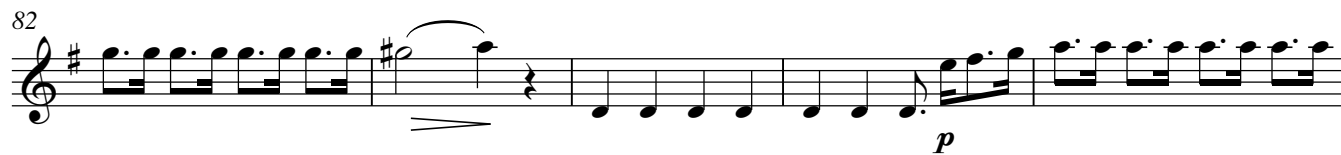
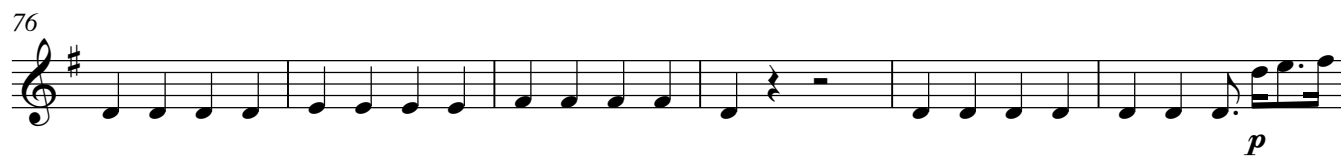
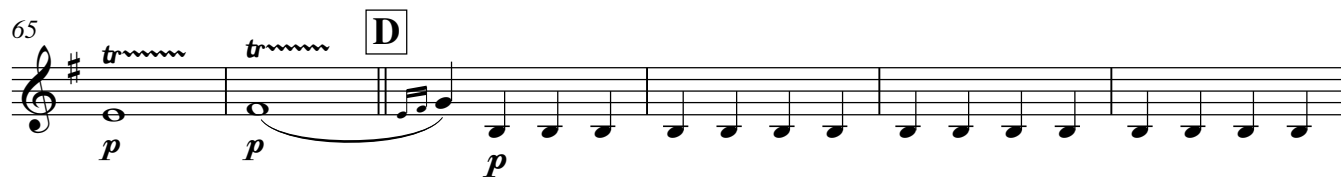
17

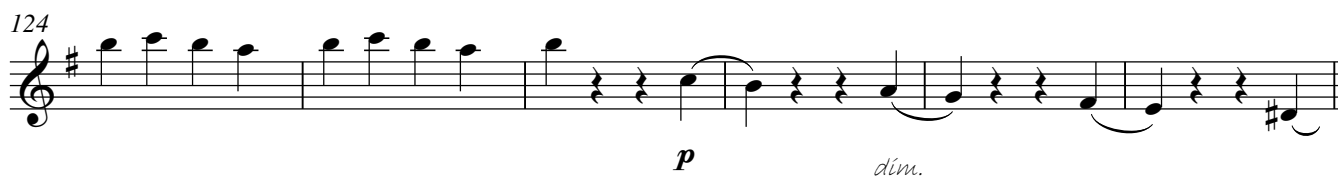
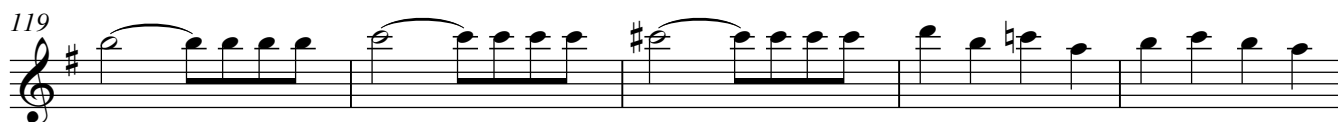
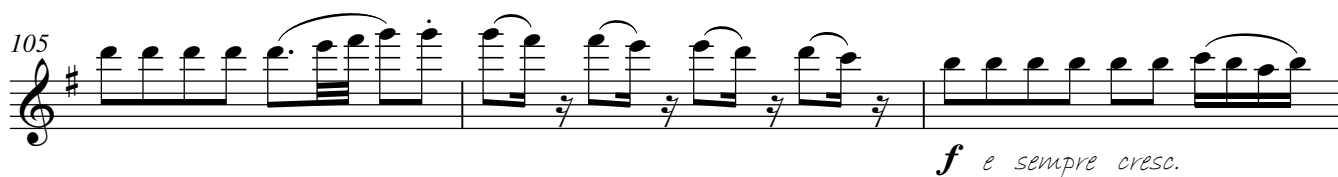
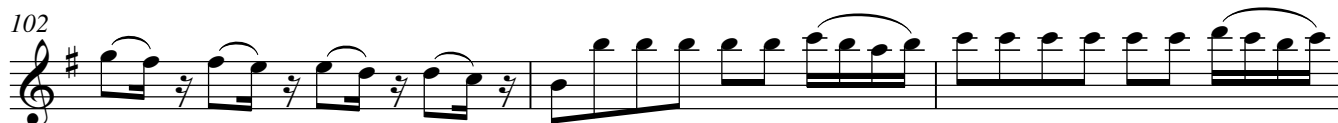
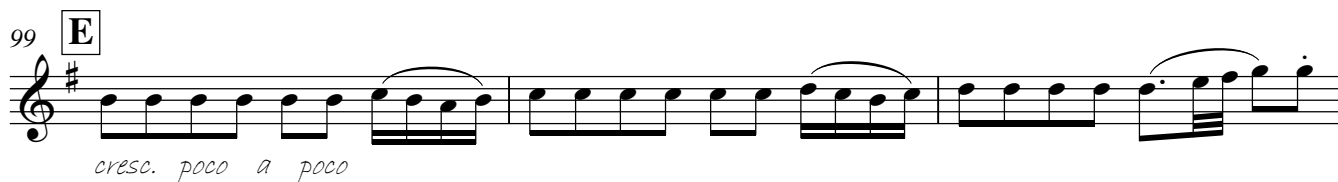
21

24 **B** *ff*

30

35





130 **F**

134

138

142

146

150

153 **G**

158

164

169

173

173

177 H

The musical score for measure 177 is written on a single staff with a treble clef and a key signature of three sharps (F#, C#, G#). The tempo/mood marking 'dolce' is written below the staff. The measure contains a sequence of eighth and quarter notes, with some notes beamed together. There are slurs over the first four and last four notes. A fermata is placed over the eighth note in the fifth measure. The measure ends with a double bar line.

183

187

Musical notation for measure 187, treble clef, key of D major (F# and C#). The melody consists of eighth and sixteenth notes with various rests and ties.

190

Musical notation for measure 190, treble clef, key of D major (F# and C#). The melody consists of eighth and quarter notes with some beamed sixteenth notes. The bass line has a whole note chord in the first half and a half note chord in the second half.

193

f e sempre creso.

196



199

Exercise 199 is a single-staff piece in treble clef with a key signature of three sharps (F#, C#, G#). The melody is composed of eighth and sixteenth notes, featuring slurs and a triplet of eighth notes. The exercise concludes with a double bar line.

I Piu mosso